

Your trusted partner for
**Pipeline Geometric
Inspection**



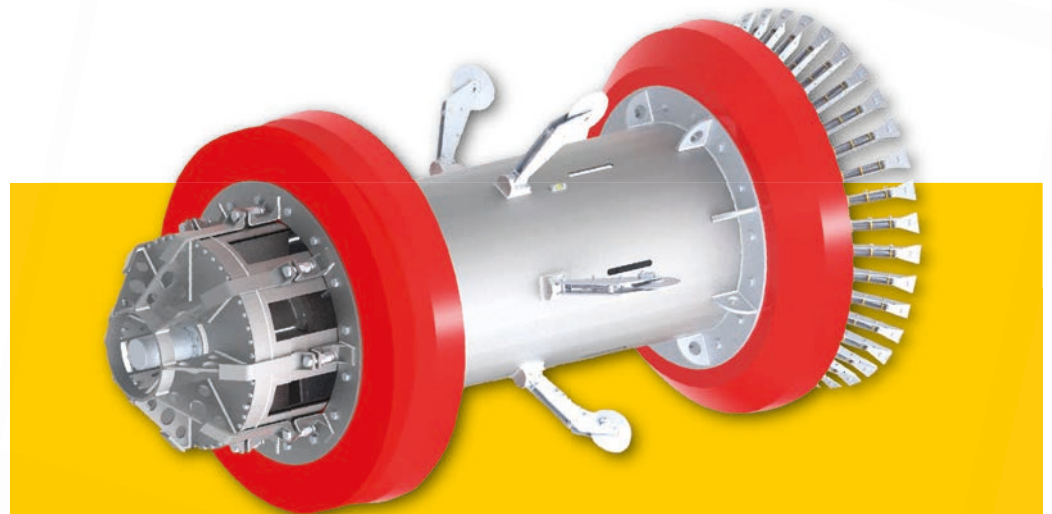
Celebrating Experience
and Excellence



The Advanced Pipeline Geometry pig

The Advanced Pipeline Geometry pig combines high-accuracy, multi-channel, radial measurement with 3D inertial measurement to provide useful data about the pipeline structural integrity. Each geometry pig is equipped with a data logger that registers dynamic behavior, acceleration and rotation, temperature and pressure. Pipesurvey has developed powerful and user friendly DATsurvey® software. With this diagnostic tool the operator can review pipeline features and anomalies at any scale, distance or clock position and from every perspective as you wish. Data is visualized in line-, color- or 3D-plots. Statistical run data, creating additional dig sheets and on-line support are standard services included in DATsurvey. The Advanced Pipeline Geometry pig combines run data with a time-based benchmarking system in order to provide accurate coordinates of pipeline features.

The Pipesurvey Advanced Geometry Pig is used to detect and measure dents, buckles, wrinkles, ovalities, weld penetration as well as bend radii, misalignments, and pipeline profile.



TOOL SPECIFICATIONS

Pipe sizes	6" – 56"
Inspection distance	Up to 250 km, consult for longer distances
Pressure range	Up to 230 bar
Minimum Bend Radius	1.5D
Velocity range	0.1 – 70 m/s, Active Speed Control available for higher gasflows
Location accuracy	+/- 1 m [GPS], 0.1 m from girth weld [Odometer]
Dent Detection Threshold	1% of I.D.
Ovality Detection Threshold	2% of I.D.
Depth Resolution	0.5% I.D.
Minimum Bore straight pipe	75% of Nominal Pipeline Diameter

Active Speed Control • Multi-diameter inspection • Bidirectional inspection • Low-flow solutions • Spatial mapping and strain analysis
Small diameter pipelines • Low friction tools • Brushless design for traverse of umbilicals • Short radius bends • Illegal Hot Taps

ISO9001:2015 – ISO14001:2015 – OHSAS18001:2007 – POF:2016 – API1163 – ASNT-ILI-PQ2017 – NACE SP0102:2017



ADDRESS

Houtkopersstraat 22
3334 KD Zwijndrecht
The Netherlands

CONTACT

T: +31 (0) 78 610 1428
F: +31 (0) 78 610 2128

E: info@pipesurveyinternational.com
W: www.pipesurveyinternational.com