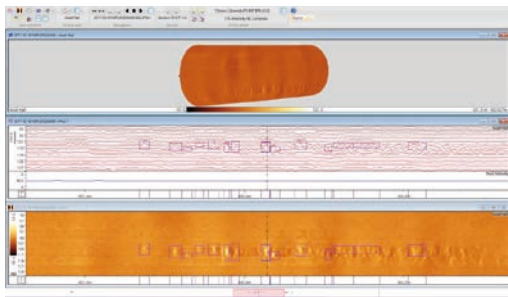


# Your trusted partner for **Pipeline Integrity Assessment**



Celebrating Experience  
and Excellence

# Pipeline Integrity **Assessment**



Based on inspection data, pipeline integrity engineers can provide a complete integrity assessment of the pipeline. Individual corrosion features are assessed on their severity and potential risk.

Corrosion growth can be assessed based on comparison with previous inspection data. Inspection data can be integrated in a Fitness for Purpose (FFP) Analysis, which prioritizes the maintenance and repair activities. External factors such as environment, human interference, soil and

population are combined with the results of the Fitness for Purpose report to generate a Risk Based Assessment (RBA).

As part of the service, all inspection reports come with raw processed data and the latest version of DATsurvey®. With this extremely powerful and user-friendly interface the customer can review the inspection data. One can navigate through the pipeline on a variable scale, create custom views, print dig verification sheets and analyze run profiles and anomaly statistics.

DATsurvey® has the capability to synchronize results of various inspection runs. This significantly contributes to the confidence level of the integrity assessment.

Pipeline defect assessments can be delivered in accordance with ASME B31G, DNV RP-F101, or any other defect assessment method as per customer specification, national code or regulation. All services provided by Pipesurvey International are in full compliance with the latest standards of Pipeline Operator Forum, API 1163, ASNT-PQ-ILI-2010 and NACE-SP-102.

Active Speed Control • Multi-diameter inspection • Bidirectional inspection • Low-flow solutions • Spatial mapping and strain analysis  
Small diameter pipelines • Low friction tools • Brushless design for traverse of umbilicals • Short radius bends • Illegal Hot Taps

ISO9001:2015 - ISO14001:2015 - OHSAS18001:2007 - POF:2016 - API1163 - ASNT-ILI-PQ2017 - NACE SP0102:2017



## ADDRESS

Houtkopersstraat 22  
3334 KD Zwijndrecht  
The Netherlands

## CONTACT

T: +31 (0) 78 610 1428  
F: +31 (0) 78 610 2128

E: [info@pipesurveyinternational.com](mailto:info@pipesurveyinternational.com)  
W: [www.pipesurveyinternational.com](http://www.pipesurveyinternational.com)