

Your trusted partner for
**Pipeline Inspection
and Integrity Assessment**



Celebrating Experience
and Excellence

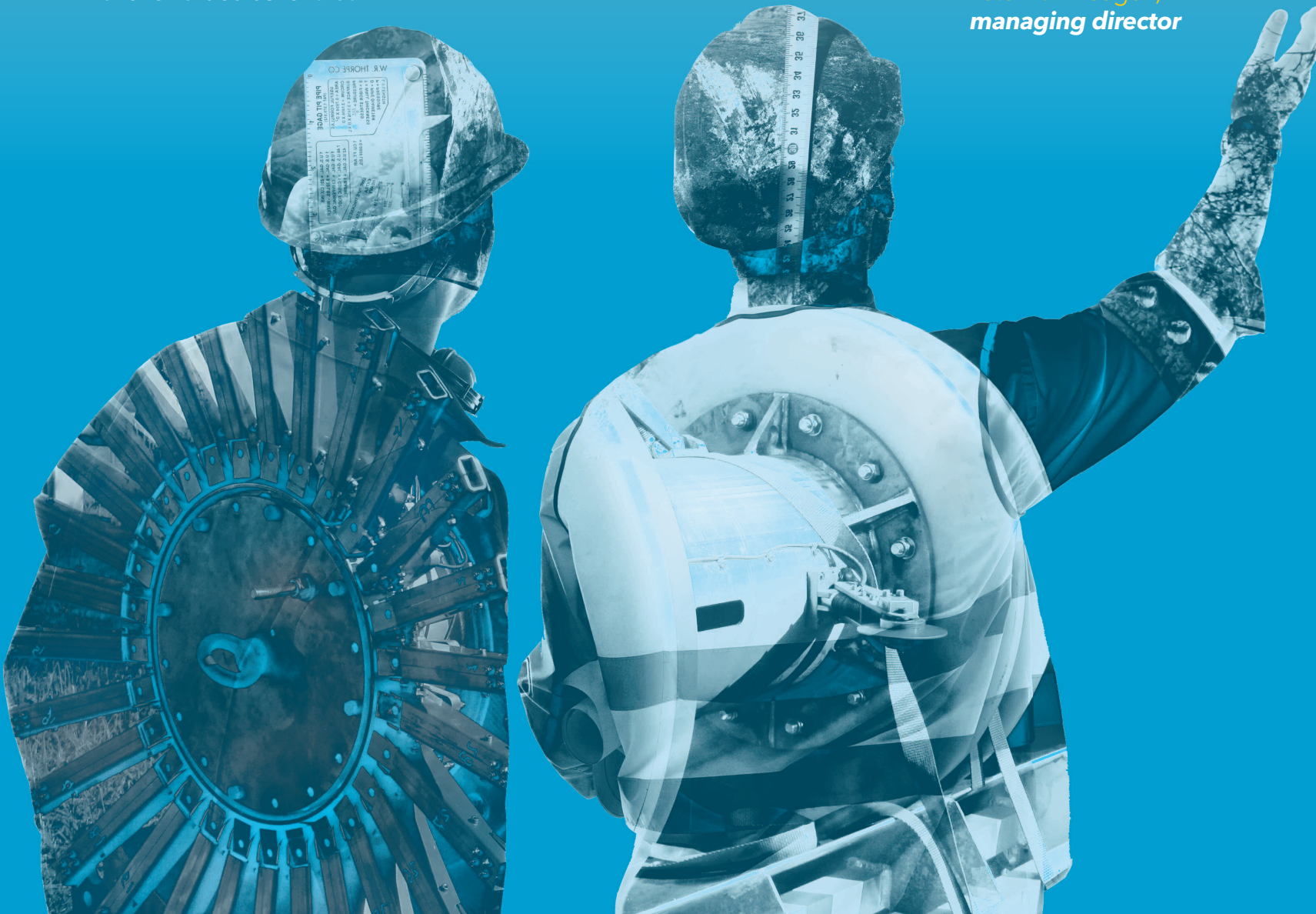
pipeline inspection, **a solution for every problem!**

'My engineers work conscientiously and dutifully. It is our commitment to be prompt, responsive and to live up to our commitments. Our customers have rewarded us for that.'

We have proudly gained excellent references from major oil- and gas companies around the globe, both in onshore and offshore operations.'

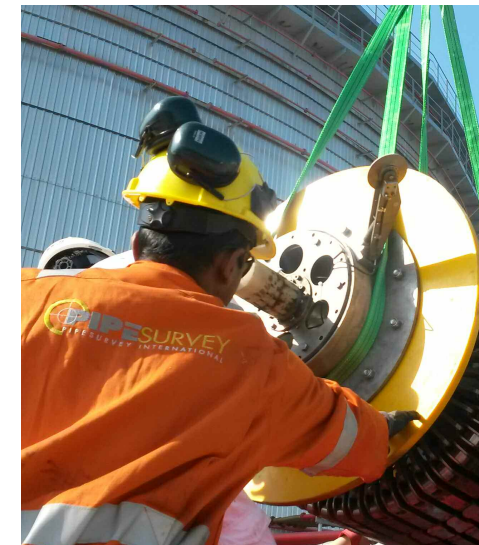


*Peter van Beugen,
managing director*



Your **trusted partner**

Pipesurvey technology is tailored for the new frontiers of present day inspection requirements. This includes bidirectional, multi-diameter inspection of pipelines in challenging flow regimes. The Pipesurvey operations team has mastered complex pigging operations and have an iron grip on HSE, planning, logistics, communication and customer service.



Innovation in **technology, software and engineering**

Pipesurvey International is a front runner in the sourcing and application of the latest standard technologies, software development and engineering design. As a technology driven company, Pipesurvey are the first to build full flexible bidirectional tools for 25% reduction. Our company continually addresses new challenges, pursues new opportunities

Innovation is in the DNA of our company. Our team of young, dynamic and skilled engineers in the disciplines of mechanical and electrical engineering, software development, NDT technology, data analysis and pipeline integrity are continuously committed to new challenges.

Technology **for a better world**

Pipeline integrity is a dynamic field with a continuous increase of demands, challenges and opportunities. Local and national authorities put a growing emphasis on the control of oil and gas infrastructure. From the beginning, Pipesurvey International has pursued innovative design and engineering to overcome the hurdles of difficult to inspect pipelines. We make reliable and accurate tools available to the industry. Our technicians and engineers have



together accumulated years of experience and understand the challenges both in the office and in the field. Our customers highly value the personal touch and one-to-one short communication lines with key personnel in our operational and pipeline integrity departments. Being a relatively young and medium sized company, Pipesurvey offers a quick response to your challenge and is the chosen partner for solutions development.



Solutions



CORROSION

MFL and C-MFL true XHR resolution tools are used in gas and liquid pipelines to assess pipe wall thickness and metal loss. Pipesurvey magnetic inspection tools use the highest attainable resolution of tri-axial sensors to accurately determine the dimensions of the metal loss. The tools are low-friction wheel-supported devices, flexible and bidirectional and tailored for the challenges of piggable and unpiggable pipelines



CLEANING

Pipeline cleaning is an essential and sometimes critical item in a pigging operation. Besides using a variety of pipeline cleaning devices with discs, magnets, descalers, bypass and other features, Pipesurvey International offers the Kathar® Pipeline cleaning program. Kathar® is a range of green-table cleaning agents that help solve problems such as black powder, wax and scale.



CAMERA

The Camera tools are autonomous, free swimming devices which offer a full coverage visual inspection of the pipeline. No umbilical is required and pipelines without limitation in length can be inspected. Tools currently available in sizes 8" and up. Inspection data can be integrated in DATsurvey software and synchronized with ILI data.



CRACKS

Crack-type defects with opening of more than 0.2 mm have been made visible by special signal processing of MFL signals. Regular MFL technology has been used to assess crack-type defects in girth welds, whereas C-MFL type signals are used to detect axially oriented crack-type defects.



GEOMETRY

The Advanced Pipeline Geometry Pig combines high-accuracy multi-channel radial measurement with 3D inertial measurement to provide useful data about the pipeline structural integrity. Each geometry pig is equipped with a data logger that registers dynamic behavior, acceleration and rotation.



PIPELINE INTEGRITY ASSESSMENT

Based on inspection data, pipeline integrity engineers provide a detailed integrity assessment of the pipeline. Individual corrosion features are assessed on their severity and potential risk. Inspection data can be integrated in a Fitness for Purpose Analysis, which prioritizes the maintenance and repair activities. External factors such as environment, human interference, soil and population are combined with the results of the Fitness for Purpose report to generate a Risk Based Assessment.



RESEARCH AND DEVELOPMENT

As a technology driven company, Pipesurvey can boast on the highest ratio of return in development in the industry. Being the first to build full flexible bidirectional tools for 25% reduction, our company continually addresses new challenges, roams for new opportunities and applies new available technologies and devices to improve the performance and accuracy of tools and software.



XYZ PIPELINE MAPPING

High-end Fibre-optic Gyroscopes offer accurate spatial information about the pipeline. All pipeline features, welds and anomalies will be reported with their location in GPS coordinates. When combined with strategically chosen AGM markerpoints and measured in Differential GPS, the XYZ unit will deliver sub-meter accuracy of the pipeline features.

Active Speed Control • Multi-diameter inspection • Bidirectional inspection • Low-flow solutions • Spatial mapping and strain analysis
Small diameter pipelines • Low friction tools • Brushless design for traverse of umbilicals • Short radius bends • Illegal Hot Taps

ISO9001:2015 - ISO14001:2015 - OHSAS18001:2007 - POF:2016 - API1163 - ASNT-ILI-PQ2017 - NACE SP0102:2017



ADDRESS

Houtkopersstraat 22
3334 KD Zwijndrecht
The Netherlands

CONTACT

T: +31 (0) 78 610 1428
F: +31 (0) 78 610 2128

E: info@pipesurveyinternational.com
W: www.pipesurveyinternational.com